

FP-3.5 Pedal pump

Operates two hydraulic cylinders in parallel

The FP-3.5 is a compact, pedal operated hydraulic pump with integrated non-return valves. The valves ensure stability by uneven, static loads on two-cylinder applications.

Application

FP-3.5 is designed to drive one or two hydraulic cylinders, typically for height adjustment of working platforms or tables.

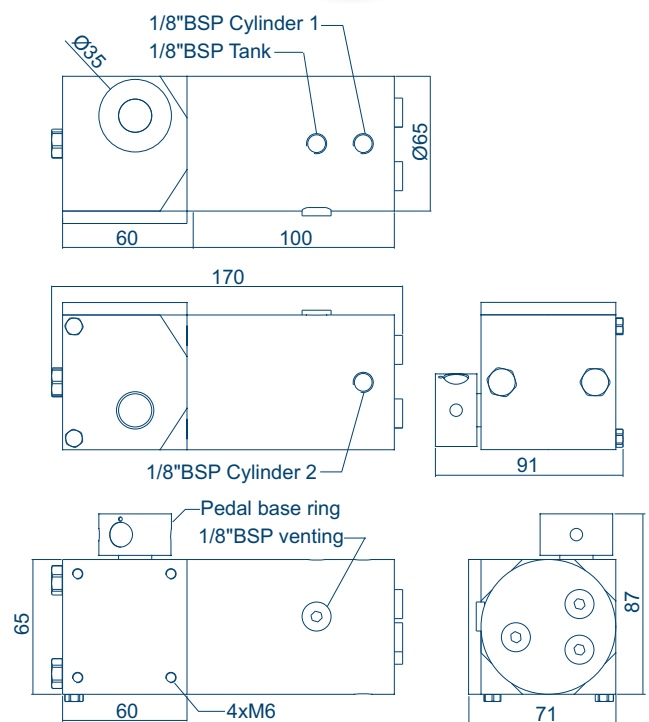
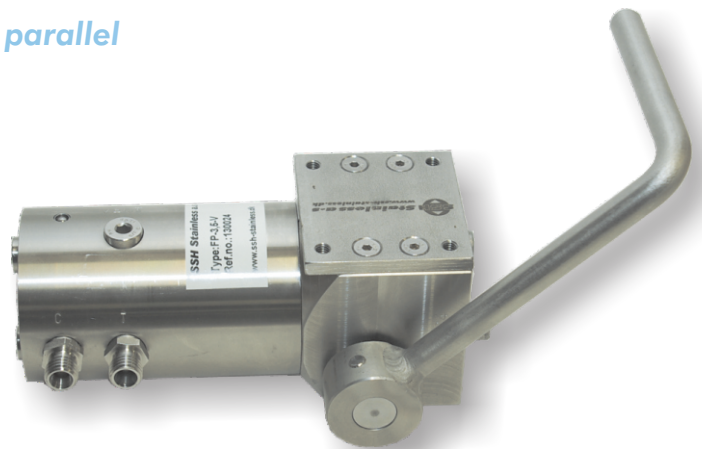
Features

- ☑ Capacity 3.5 cc/stroke
- ☑ Pump and release function combined in pedal
- ☑ Throttled release flow to prevent sudden drop of load
- ☑ Spring centered pedal
- ☑ Non-return valves in outlet ports
- ☑ Maintenance free
- ☑ Easy to install
- ☑ Available with pedal fitted on left (V) or right (H) hand side.
- ☑ Customized pedal designs possible

Installation

On work platforms the pump can be installed under the platform base plate with the pedal protruding the plate.

FP-3.5 requires a separate oil tank to be installed. The tank connects to the "T" port. The cylinders are connected to the "C1" and "C2" ports on either side of the pump housing.



Specifications

Displacement	Fluid
3.5 cc / stroke	Mineral/Synthetic oil
Pressure	Weight
max. 200 bar	2.7 kg

SSH Stainless a-s

Englandsvej 20-22 • 5700 Svendborg • Denmark
 Tel: +45 6221 8531 • Fax: +45 6221 7840
 Email: ssh@ssh-stainless.dk • www.ssh-stainless.dk

**Stainless
Steel
Hydraulics**