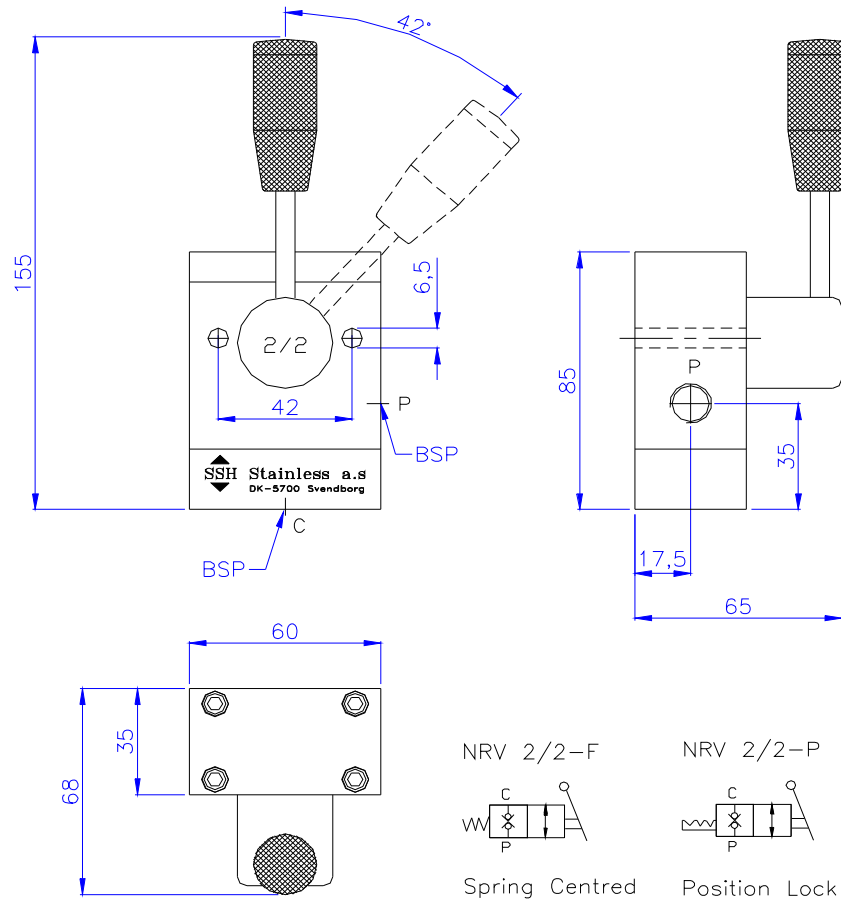



NRV 2/2 Directional Control Valve

Dimension sketch



Ordering code	Pressure medium	Max. flow L / min.	Working pressure	Connection	Temperature
NRV 2/2-x1-x2	Oil or water	10	200 bar	1/4" or 3/8"	+1° to +60° C


Please state position **x1** and connection **x2** when ordering: 

x1: Spring centred: F **x2:** 1/4" BSP
x1: Position lock : P **x2:** 3/8" BSP

How to order:
 NRV 2/2- x1 - x2

x1: Spring centred : F
x2: Connection : 3/8" BSP

Ordering code: NRV 2/2 - F - 3/8" BSP

Venligst oplys position **x1** og tilslutning **x2** ved ordre: 

x1: Fjedercentret : F **x2:** 1/4" BSP
x1: Positions-lås : P **x2:** 3/8" BSP

Eksempel på ordre:
 NRV 2/2- x1 - x2

x1: Fjedercentret : F
x2: Tilslutning : 3/8" BSP

Ordre kode: NRV 2/2 - F - 3/8" BSP