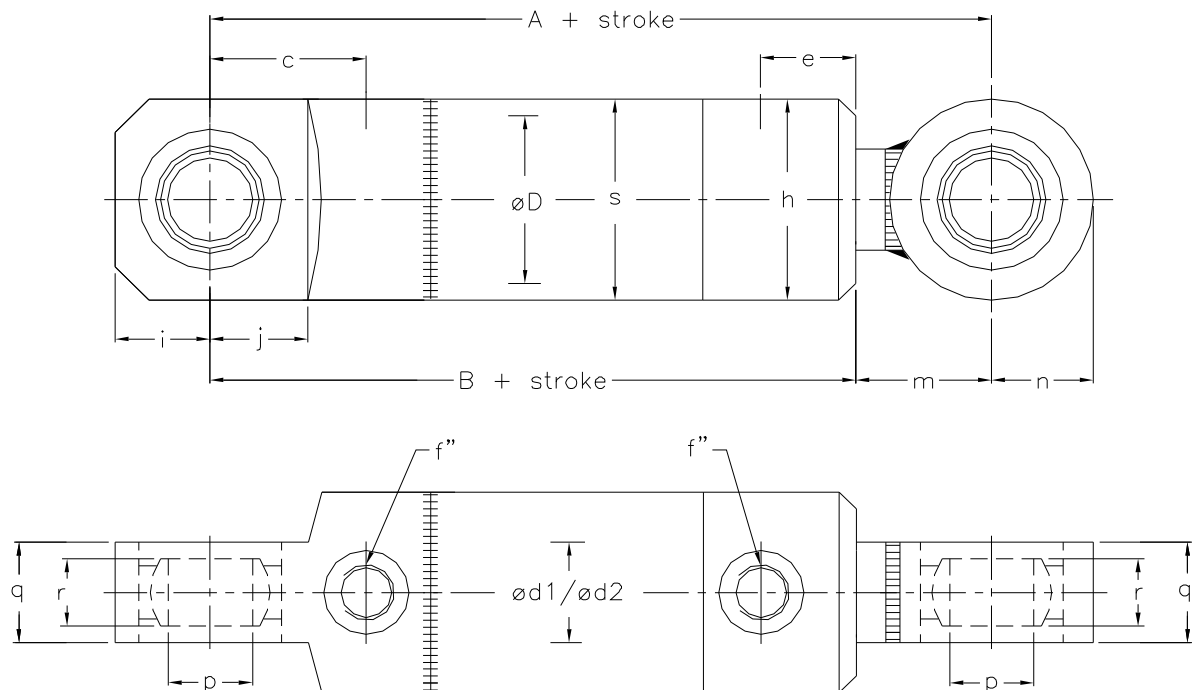


SR20 LL cylinders



Dimension table

øD	32	40	50	63	80
ød1/ød2	16	20/25	25/30	30/40	40/50
A	155	185	217	225	265
B	126	150	177	180	213
c	24	36	46	38	50
e	24	25	28	28	39
f'''	1/4"	1/4"	3/8"	3/8"	1/2"
h	50	50/55	60	75	100
i	18	25	28	35	40
j	18	23	28	35	38
m	29	35	40	45	52
n	19	25	30	35	45
p	15	20	25	30	35
q	20	25	30	35	45
r	15	16	20	22	35
s	40	50	60	75	95

How to order:



SR20 LL x1 / x2 * x3 K

x1: Inside diameter : 50 mm
 x2: Piston rod : 30 mm
 x3: Stroke : 200 mm

Ordering code: SR20 LL 50/30*200 K

Eksempel på ordre:



SR20 LL x1 / x2 * x3 K

x1: Indvendig diameter : 50 mm
 x2: Stempelstang : 30 mm
 x3: Slaglængde : 200 mm

Ordre kode: SR20 LL 50/30*200 K